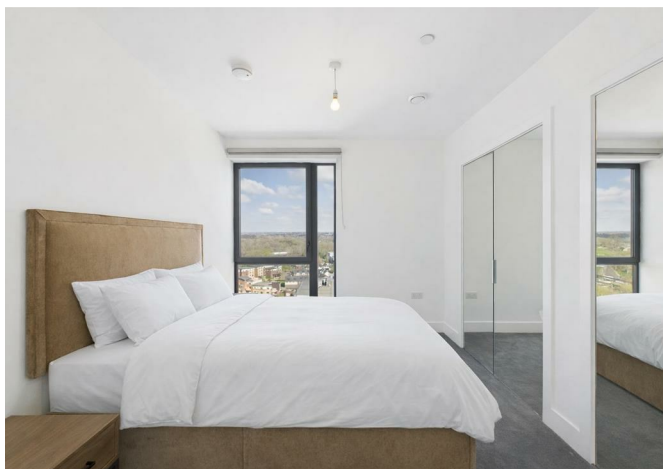




453654 Acer Point, Ascot Road, Watford, WD18 8AX
£2,250 Per month



453654 Acer Point, Ascot Road, Watford, WD18 8AX

£2,250 Per month

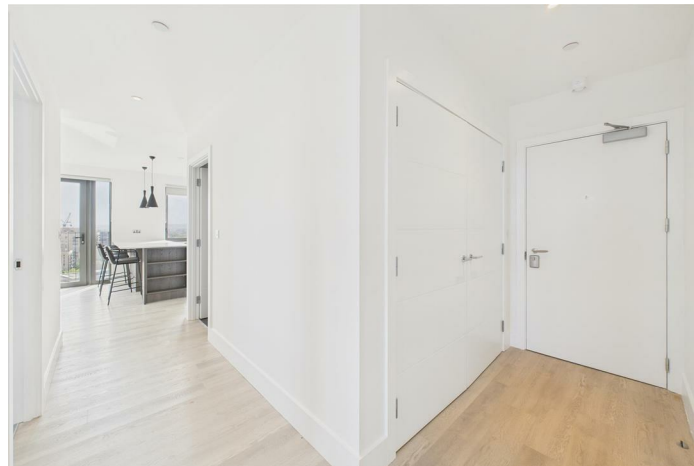
Low-deposit option • On-site gym • Business & Club Lounge • Private cinema • 19 mins to Euston • Pet-friendly • Award-winning service.

Discover luxury and convenience in our brand-new, exclusive development. Enjoy 24/7 on-site management for ultimate security and peace of mind, plus regular resident events to foster community. Unwind in our cozy lounge with unlimited complimentary coffee, stay fit in the fully equipped gym, and savor one month's free rent which is reflected on the price advertised. Each residence features a sleek, fully integrated kitchen with Samsung appliances, while the 19-minute Watford Junction to Euston commute keeps London easily within reach. Flexible leasing and low-deposit options make moving in effortless.

Description



Situation



Furnished/unfurnished

Council Tax Band: B

Available:

Floor Plans



Area Map



Energy Performance Graph

Energy Efficiency Rating		Current	Potential
Very energy efficient - lower running costs			
(92 plus) A			
(81-91) B		87	87
(69-80) C			
(55-68) D			
(39-54) E			
(21-38) F			
(1-20) G			
Not energy efficient - higher running costs			
England & Wales	EU Directive 2002/91/EC		

These particulars, whilst believed to be accurate are set out as a general outline only for guidance and do not constitute any part of an offer or contract. Intending purchasers should not rely on them as statements of representation of fact, but must satisfy themselves by inspection or otherwise as to their accuracy. No person in this firm's employment has the authority to make or give any representation or warranty in respect of the property.